

## Substructure single stud frame



The single metal stud frame of the HT wall system is fitted as a non-load-bearing facing formwork in front of the on-site wall or as a non-load-bearing interior wall. Fitting is carried out using vertical C-profile supports which are screwed to the floor rails at the distance of the grid or according to the outline drawing. The profile length is adjusted to the building shell height and is available up to 4 m standard, the grid spacing up to 1.25 m.

The connection to the bare ceiling is seamless and absorbs a ceiling deflection of 2 centimetres. Mineral wool is added in the stud frame depending on the sound insulation requirements. Cross beams between the vertical profile supports are used for the fixing of additional installations. Openings for doors and windows are taken into account already during the planning and building phase.

### Dimensions

Profile length	standard up to 4000 mm
Profile supports	C-profile 40 x 60 x 2 - 40 x 210 x 2 mm
Floor and ceiling rail	U-profile 60 x 60 x 1.5 - 210 x 60 x 1.5 mm
Grid spacing	max. 1250 mm

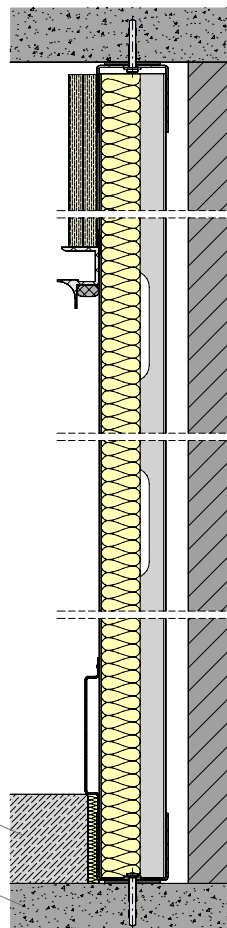
### Technical data

Profile supports	galvanised sheet steel C-profile; the side and lower connections are rigid; the upper connection to the bare ceiling is slid
Floor and ceiling rail	galvanised sheet steel U-profile; the floor rail must be leveled to the screed/bare floor

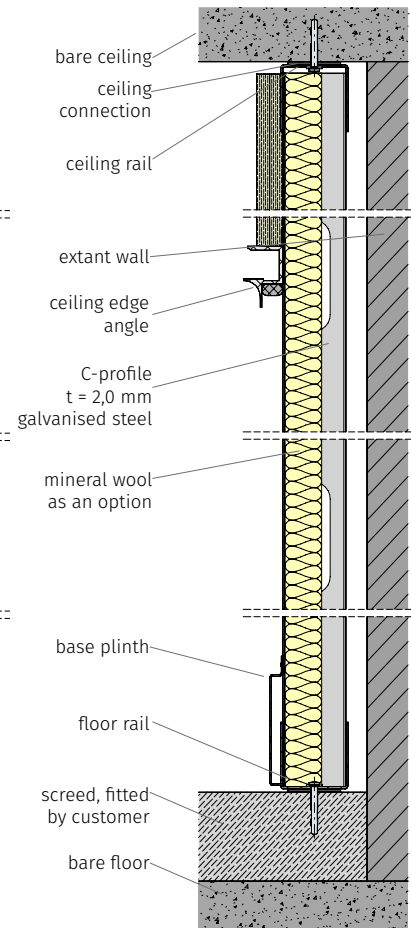
### Special fittings, supplementary items

Cross beams	galvanised sheet steel C-profile for the fixing of additional installations to the building structure
Mineral wool	60 mm thick; for increased noise protection regulations

### Installation on bare floor



### Installation on screed



screed, fitted  
by customer  
bare floor

base plinth  
floor rail  
screed, fitted  
by customer  
bare floor